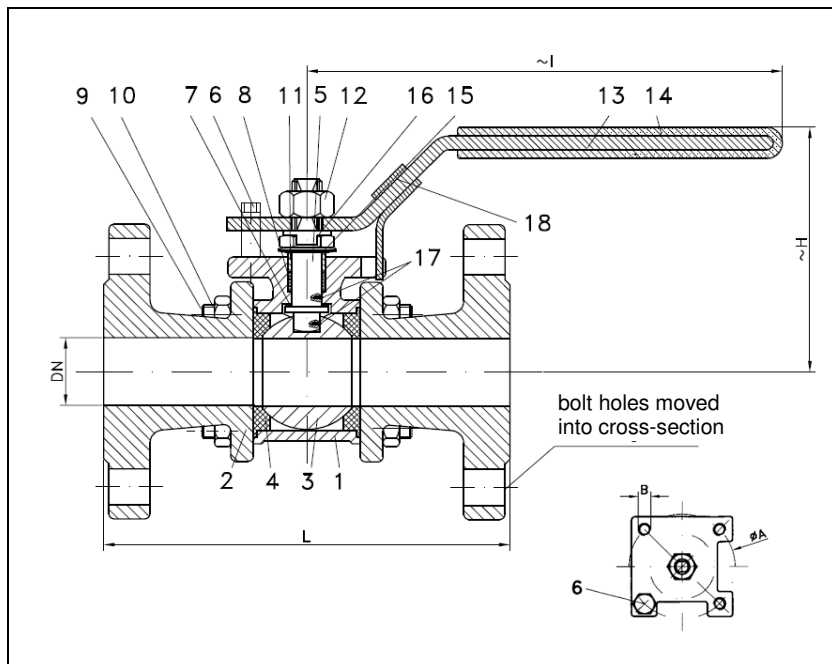


# BALL VALVES RK-PROBALL

## KH 3T F (NC), DN15 - DN100, PN16/40 safety spring locking device



Ball valves RK-Proball KH 3T all sizes are also available with pneumatical, electrical or hydraulic actuators.

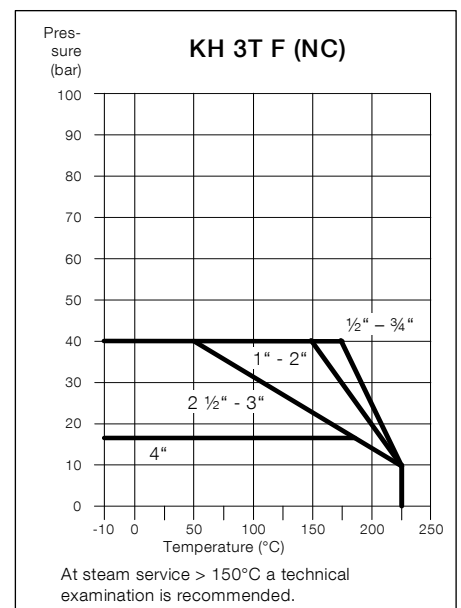
No.	Part	Material	Material
1	body	1.0619	1.4408
2	cap	1.0619	1.4408
3	ball		1.4408
4	seat		KFG
5	stem		1.4401
6	stop pin		1.4301
7	washer		KFG
8	stem packing		KF
9	hex. screw		A2-70
10	hex. nut		A2-70
11	thrust washer		1.4301
12	hex. nut		A2-70
13	lever		1.4301
14	insulation cover		Vinyl
15	plate spring		1.4310
16	locking plate		1.4301
17	antistatic element		1.4401
18	spring locking device		1.4301

**Flanged ball valves**  
full bore  
face to face acc. to EN 558, GR. 1  
flanges acc. to EN 1092

### Specification:

Three-piece ball valve, flanges acc. to EN 1092, face to face dimensions acc. to EN 558, GR. 1, full bore, blow-out-proof stem, body material stainless steel (1.4408) or steel (1.0619), antistatic device, free of non ferrous metals, seat KFG, stem packing KF, disc spring loaded adjustable, top flange DIN EN ISO 5211, approved by PED, certified acc. to GERMAN clean air act VDI 2440, lever with safety spring locking device.

Marking: RK-Proball  
Types: KH 3T F (NC)-1.0619  
KH 3T F (NC)-1.4408



**Ordering example:**  
KH 3T F (NC), DN50, PN 40, 1.4408,  
safety spring locking device

### Dimensions

DN mm	PN	dimensions (mm)			top flange ISO 5211		Kv-value m³/h	torque Nm	weight kg	
		H	I	L	Ø A	B				
15	40	67	135	130	F04	42	M5	10	5	2.1
20	40	73	135	150	F04	42	M5	25	10	2.9
25	40	80	168	160	F05	50	M6	35	11	3.9
32	40	87	168	180	F05	50	M6	46	20	5.6
40	40	103	205	200	F05	50	M6	80	26	7.4
50	40	112	218	230	F07	70	M8	110	30	10.3
65	40	156	280	290	F07	70	M8	310	70	14.4
80	40	163	376	310	F10	102	M10	360	90	23.8
100	40	194	376	350	F10	102	M10	820	120	37.2
100	16	194	376	350	F10	102	M10	820	120	34.3

06/2016

Subject to modification.